

# ProTec 100 – our Bestseller.

T1 / W1 / ASI A and T3 / W2 / ASI A as well as H1 / W6 / ASI A



We bring safety to the street







### Contraflow traffic safely separated with ProTec 100.

**Mobile crash barriers in roadworks clearly enhance traffic safety. Their containment capacity prevents road users from leaving the carriageway and colliding with oncoming traffic, while also providing safe working conditions on site.**

The mobile crash barrier ProTec 100 with a very narrow structural width of only 25 cm and a weight of 124 kg per meter is an ideal addition to the proven portfolio of ProTec products. Given the positive echo to the mobile road restraint systems ProTec 120 and 160, the Berghaus development engineers have created a crash barrier that builds on and even supplements the known advantages of the ProTec systems.

No matter what your particular application is, mobile crash barriers in the ProTec family always put you on the safe side!

#### Advantages of the ProTec 100 at a glance:

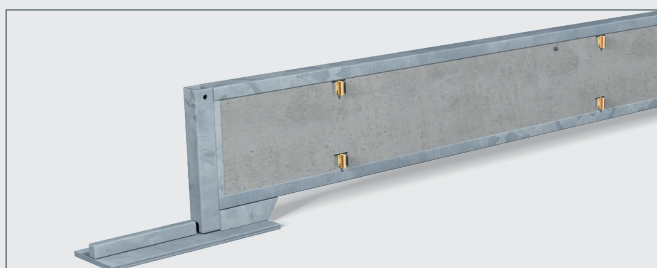
- |   |   |
|---|---|
| <ul style="list-style-type: none"><li>• all systems successfully tested according to DIN EN 1317</li><li>• positive appraisal and approval by BAST</li><li>• own development and quality-tested production</li><li>• Patent protected systems and connections</li><li>• the very low surface pressure of the elements protects road surfaces during longer standing times</li><li>• rubber-based stands protect the road surface</li><li>• low element weight enables high transport loading volume and conserves resources</li><li>• low effective range</li></ul> | <ul style="list-style-type: none"><li>• narrow structural width needs minimum space requirements</li><li>• quick and easy installation</li><li>• reflectors mounted in protected recess</li><li>• no risk of aquaplaning or of dirt accumulating in front of the crash barrier</li><li>• system with successfully tested tipping length limitation (KLB element)</li><li>• many connecting and special elements</li><li>• repair elements for swift reconstruction after an accident</li><li>• force-fit transitions available for all ProTec systems</li></ul> |
|---|---|

The ProTec family consists of several successfully tested mobile crash barriers – for all application areas of mobile road restraint systems pursuant to the ZTV-SA. Despite differing shapes and structures, all mobile crash barriers in the ProTec family can be combined with each other and fitted together with force-fit connections. Mobile crash barriers in the ProTec family can also be combined with stationary restraint systems or mobile systems by other manufacturers with a force-fit connection.

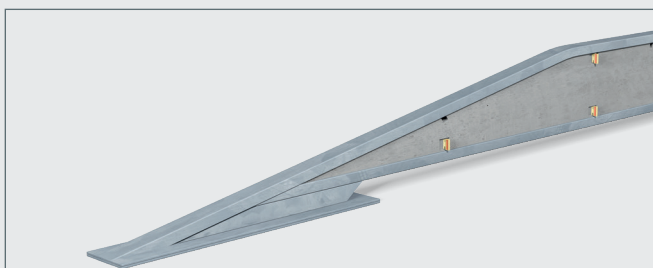
## ProTec 100: Minimum space requirements, fast installation.

Technical data	
Containment level	T1 / T3 / H1
Effective range	W1 / W2 / W6
ASI value	A
Structural width	0.25m
Height	0.56m
Element length	6m
Minimum installation length	137m / 137m / 118m
Ground anchoring	no / no / yes*
Weight per m	124 kg

Test conditions as per DIN EN 1317-2		
Acceptance test	<b>TB 21 / TB 41</b>	<b>TB 11 / TB 42</b>
Test vehicle	PKW / LKW	PKW / LKW
Weight	1.3t / 10t	0,9t / 10t
Impact angle	8° / 8°	20° / 15°
Speed	80km/h / 70km/h	100km/h / 70km/h



Standard element 6m



Start/end element

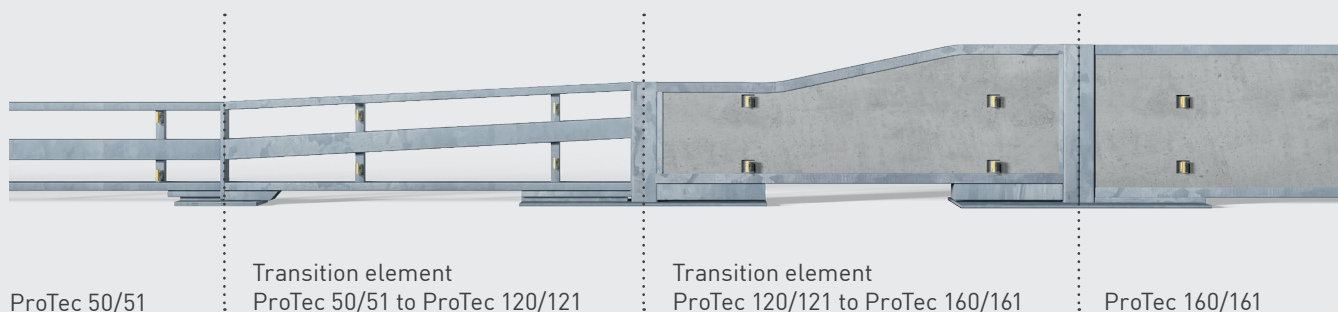


Dilatation element



Tipping length limitation (KLB element)

### Combination example for a force-fit connection across the whole ProTec family.



The ProTec 100 set in scene:  
as 360° view and as video



\*only start/end points



We bring safety to the street



Visit our virtual  
showroom at:  
[avs-showroom.com](https://avs-showroom.com)  
or scan the QR code



**Peter Berghaus GmbH**

Herrenhöhe 6

51515 Kürten-Herweg

**P** +49 2207 9677-0

**F** +49 2207 9677-80

[mail@berghaus-verkehrstechnik.de](mailto:mail@berghaus-verkehrstechnik.de)

[www.berghaus-verkehrstechnik.de](http://www.berghaus-verkehrstechnik.de)



Subject to technical changes and errors.  
Products may differ from illustrations shown.  
All details are approximate.

03/2022